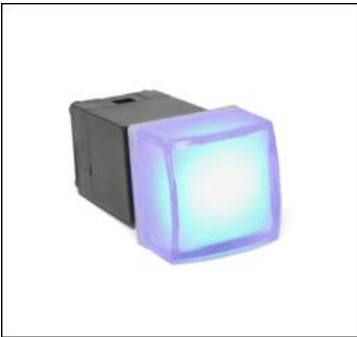


E-SWITCH ANNOUNCEMENT
E-Switch Announces New Ultra-miniature Tact Switch



E-Switch's LP16 Series Pushbutton Switch has a 50,000,000 Life Cycle Expectancy

MINNEAPOLIS, MN --- E-Switch announces the LP16 series long life, illuminated pushbutton switch. Its' long life of 50,000,000 cycles is realized by the help of magnets. There are two cap sizes – 12.2mm and 14.6mm square, and there are quite a few illuminations options available. You can choose the cap color, LED color options, and/or a diffuser color.



**E-Switch's LP16 Series
Pushbutton Switch**

This illuminated pushbutton switch also has a long travel of 3.3mm.

Specifications include:

- **Life Expectancy:** 50,000,000 cycles
- **Contact Rating:** 100mA, 20VDC
- **Contact Resistance (Initial Max):** 150 milliohms
- **Function:** SPST, Off-(On)
- **Insulation Resistance:** 10Megaohms min at 500VDC
- **Dielectric Strength (1 min):** 500 VAC
- **Operating Force:** 250 gf +/- 50gf
- **Total Travel:** 3.3mm +/- 0.3mm
- **Operating/Storage Temperature:** -5°C to +60°C

The markets for the LP16 series illuminated pushbutton switch include audio / visual applications, instrumentation, telecommunication, networking and the computer peripheral market.

Visit E-Switch at www.e-switch.com to request your full-line catalog! You can also request a sample of one of over 4,000 discrete part numbers for one of your projects!

About E-Switch. In 2009, E-Switch, Inc. acquired Lamb Industries and now offers one of the broadest switch lines available today. Both companies have been delivering innovative and quality switches to the electronics, telecom, high tech, instrumentation, industrial, appliance and consumer markets since 1979. Located in Minneapolis, Minnesota, and Portland, Oregon, their global reach extends to Europe, Asia and Latin America. Products include Rocker, Toggle, Slide, Tact, Pushbutton, Dip, Rotary, Keylock, Snap Action, Power, illuminated switches, and more. E-Switch has local reps, distributors, engineers and account managers on hand to provide specifying assistance and quick response to requests, along with a top notch sampling and cross-referencing program. E-Switch's online catalogs include complete specifications, drawings and schematics.

E-Switch, Inc.
7153 Northland Drive N
Minneapolis, MN 55428
www.e-switch.com
800-867-2717